

GlobalView

MarketView Desktop Version 5.5 Functionality Guide

9/27/2011

Table of Contents

1. Introduction.....	2
2. Overview of Features & Enhancements.....	3
3. Time Zone Control.....	4
4. Auto Login.....	5
5. Desktop Icon.....	6
6. Pivot Point.....	7
7. MACD Study with Oscillator Plot Style.....	8
8. Duplicate via Right Mouse Click.....	9
9. Study on Study.....	10

MarketView version 5.5 provides improved functionality and many new exciting features for the GlobalView customer base.

Since 1996, GlobalView has been providing innovative energy market data and software solutions that have helped organizations around the globe reduce costs and improve decision support and trading results. All while providing our customers with the ability to integrate real-time, historical, and proprietary data.

We continuously design and distribute market information and analytical tools our clients need to operate their business. In close cooperation with the energy industry, our solutions suite is developed using market leading technologies and industry best practices to increase operational efficiencies for our customers.

This document describes the latest release of new features and enhancements as we continuously strive to make MarketView the best tool the Market Data industry has to offer.

2.

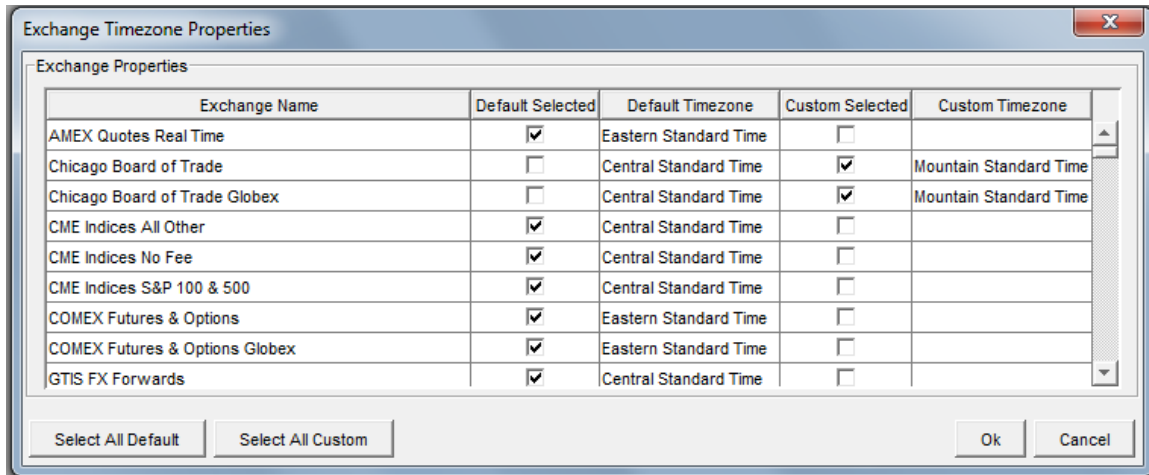
Overview of Features & Enhancements

- Time zone control is now available for live Exchange Data. Prices are now viewable in Local Time, Exchange Time, or Coordinated Universal Time
- New Auto Login feature allows quick start up with fewer steps
- MarketView can now be launched via a desktop shortcut icon
- Pivot Point study is now available within MarketView
- Revamped MACD study now includes oscillator plot style
- Ability to easily duplicate components via right click menu
- Enhanced study on study capabilities in charting to support studies requiring multiple data point inputs

3.

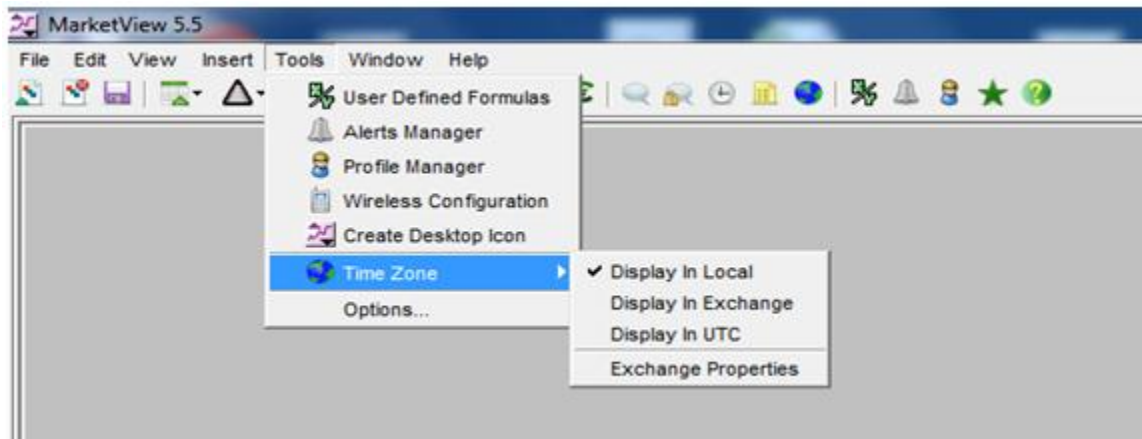
Time Zone Control

The ability to choose time zones by the exchange has been added to support multiple selection criteria.



Time zone control is available for live Exchange Data and the prices are viewable in Local Time, Exchange Time, or Coordinated Universal Time (UTC).

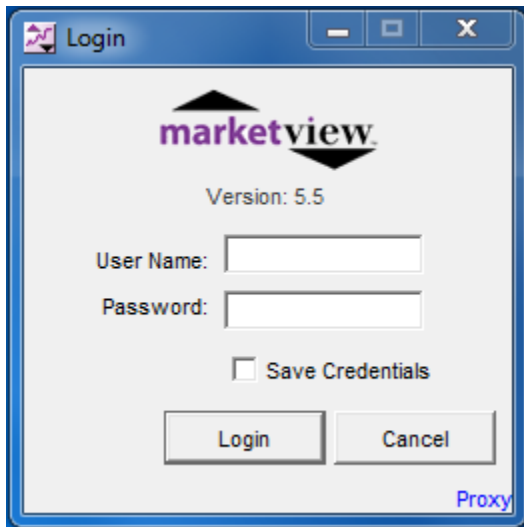
To begin choosing your own time zone preferences, just click on the Tools and Time Zone options, as shown below.



4. Auto Login

Logging into MarketView has never been easier! We've provided our customers with the choice of bypassing the login screen and going directly into MarketView.

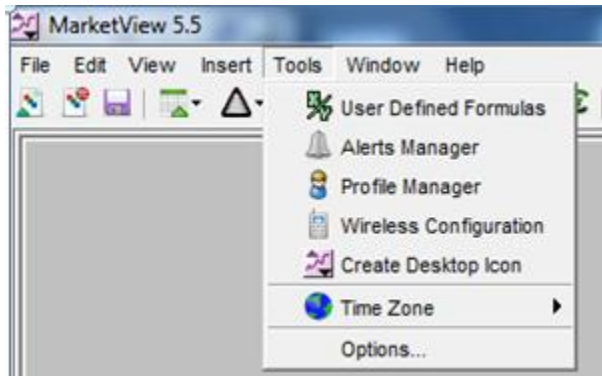
This can be achieved by selecting the "Save Credentials" option, as shown below.



From that point forward, accessing MarketView is just one click away from the MarketView website!

5. Desktop Icon

In addition to the ease by which MarketView can be launched, as described above, adding a MarketView 5.5 desktop icon also requires just a few steps.



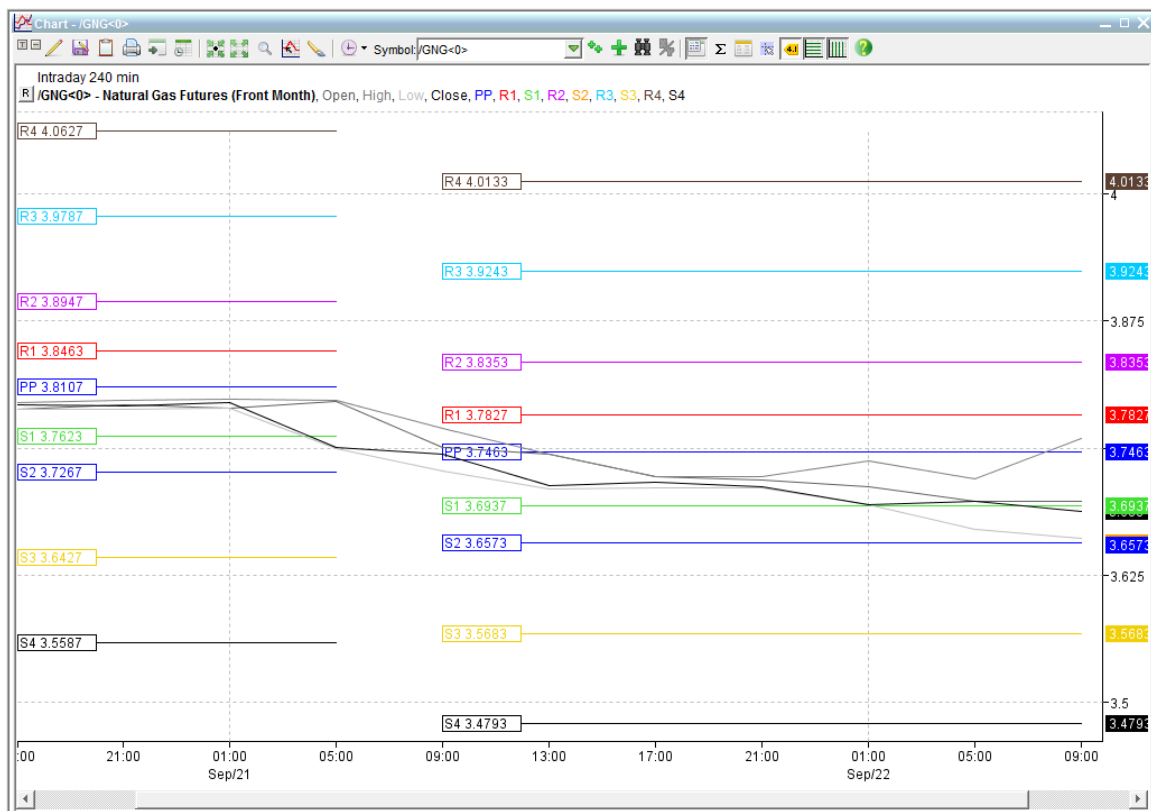
Simply open the Tools menu and click on "Create Desktop Icon." This will add an icon to your desktop and MarketView can be launched via the new shortcut.

The desktop icon works in combination with the auto login feature, thereby providing access to MarketView directly from the desktop!

6. Pivot Point Study

Also new to the MarketView application is a Pivot Point study. Pivot Point studies are a nice choice when attempting to narrow the focus of interpreting the direction of a forward price.

Operating as distinct formulas, exist four sets of support and resistance figures based on the prior day's pivot point. The Pivot Point study is available on intraday data and can be initiated through a chart, as shown below.



This study is yet another tool that GlobalView offers to provide our customers with a wide variety of choices to suit individual trading styles.

7. MACD Study w/ Oscillator Plot Style

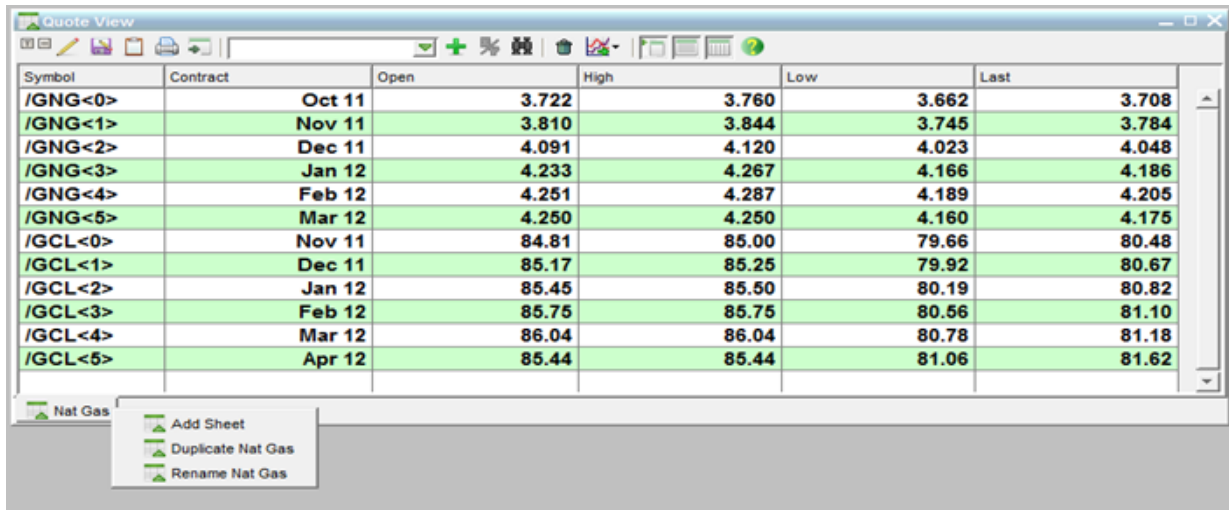
GlobalView has also introduced an oscillator plot style to compliment the Moving Average Convergence Divergence (MACD) study.



The oscillator plot style is revealed as a histogram and nicely illustrates the gap between the oscillator and moving average (EMA) curves. See the sample chart above and notice the red and green lines with the corresponding orange histogram.

8. Duplicate via Right Mouse Click

An added feature is the newly created function to duplicate tabs in active windows by a simple click of a mouse.



The screenshot shows a window titled "Quote View" with a table of contract data. The table has columns for Symbol, Contract, Open, High, Low, and Last. The data is as follows:

Symbol	Contract	Open	High	Low	Last
/GNG<0>	Oct 11	3.722	3.760	3.662	3.708
/GNG<1>	Nov 11	3.810	3.844	3.745	3.784
/GNG<2>	Dec 11	4.091	4.120	4.023	4.048
/GNG<3>	Jan 12	4.233	4.267	4.166	4.186
/GNG<4>	Feb 12	4.251	4.287	4.189	4.205
/GNG<5>	Mar 12	4.250	4.250	4.160	4.175
/GCL<0>	Nov 11	84.81	85.00	79.66	80.48
/GCL<1>	Dec 11	85.17	85.25	79.92	80.67
/GCL<2>	Jan 12	85.45	85.50	80.19	80.82
/GCL<3>	Feb 12	85.75	85.75	80.56	81.10
/GCL<4>	Mar 12	86.04	86.04	80.78	81.18
/GCL<5>	Apr 12	85.44	85.44	81.06	81.62

Below the table, a context menu is visible for the "Nat Gas" tab, with the following options:

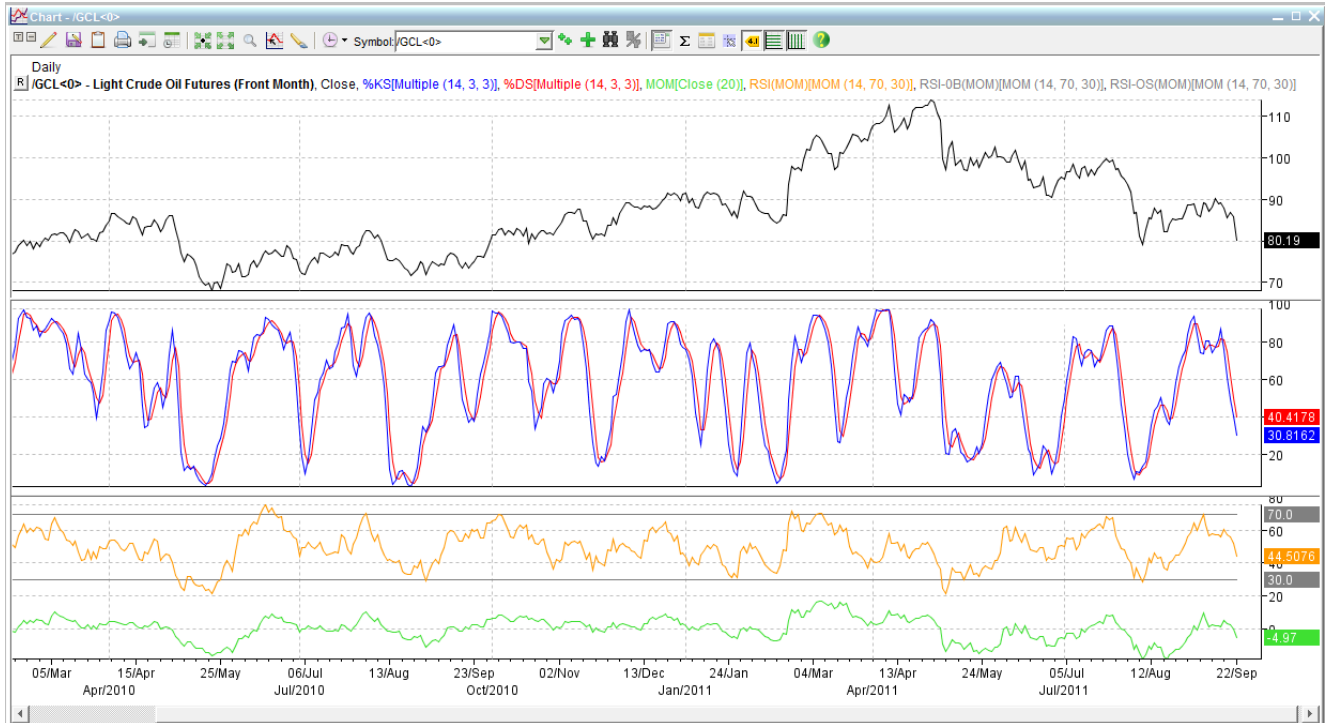
- Add Sheet
- Duplicate Nat Gas
- Rename Nat Gas

By applying a right mouse click to the tab in the active window, a sub-window pops up which provides the option to duplicate that tab. In the example above, the Nat Gas tab is clicked and the "Duplicate Nat Gas" choice is made available.

This new feature creates an exact replica of the existing tab so that minimal edits are required in configuring the copied tab for its intended purpose.

9. Study on Study

With the release of MarketView 5.5 you can now add study on top of study for more extensive and detailed commodity chart. This new feature provides a seemingly endless number of study combinations.



The example above is a Relative Strength Index study added on top of a Momentum study. This is just one example. Study on Study is a powerful feature that provides superior flexibility to the MarketView customer.